









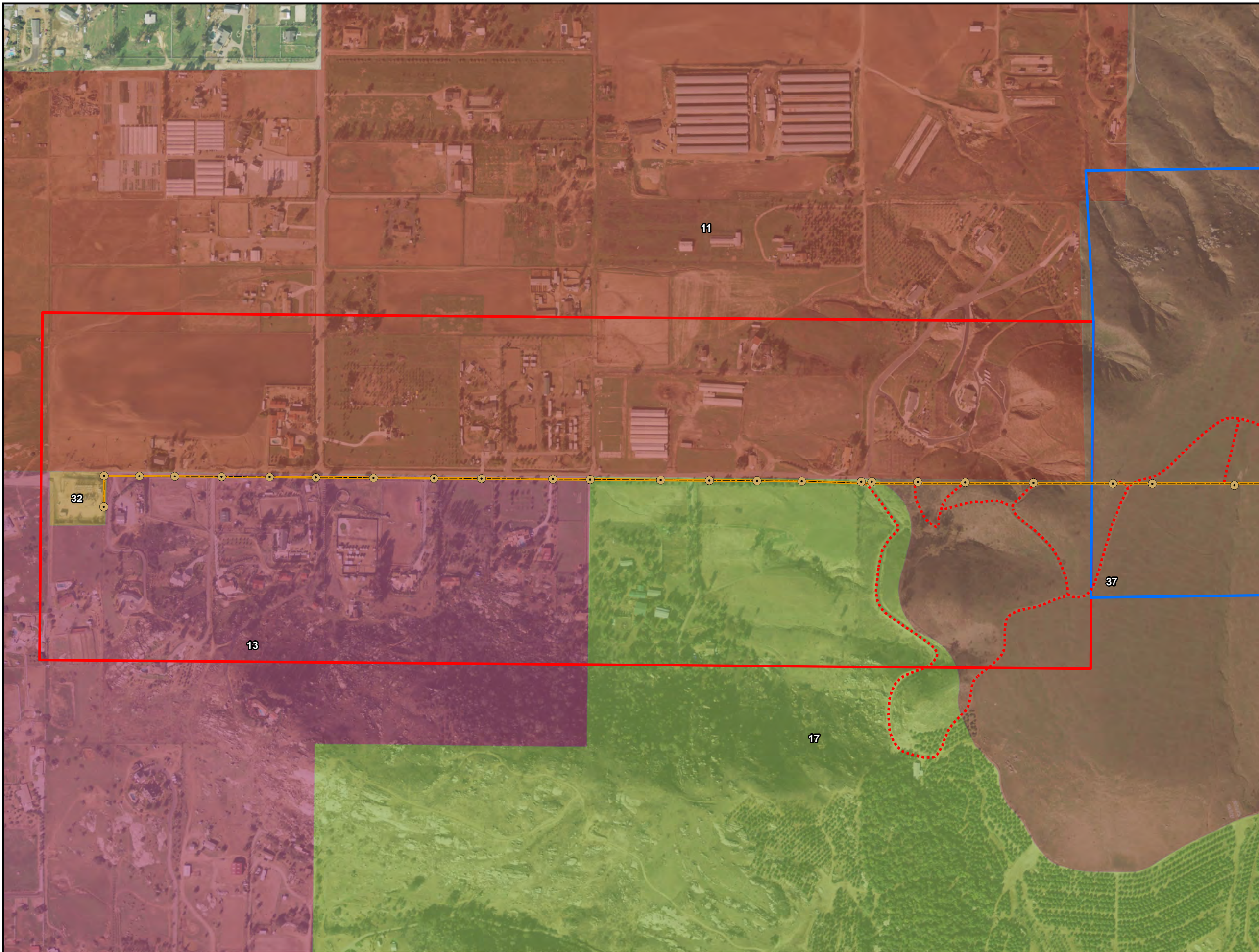


TL-637 Land Use Designations Map

Page 1 of 14

Version Date: 5/16/2013

-  Poles
-  TL-637 Centerline
-  Access
- Land Use Units**
-  Land Use Unit - 1
-  Land Use Unit - 2
- Land Use Designations**
-  37. OPEN SPACE (CONSERVATION)
-  32. PUBLIC/SEMI-PUBLIC FACILITIES
-  17. SEMI-RURAL RESIDENTIAL (SR-10)
-  11. SEMI-RURAL RESIDENTIAL (SR-2)
-  13. SEMI-RURAL RESIDENTIAL (SR-4)














SCALE=1:5,500

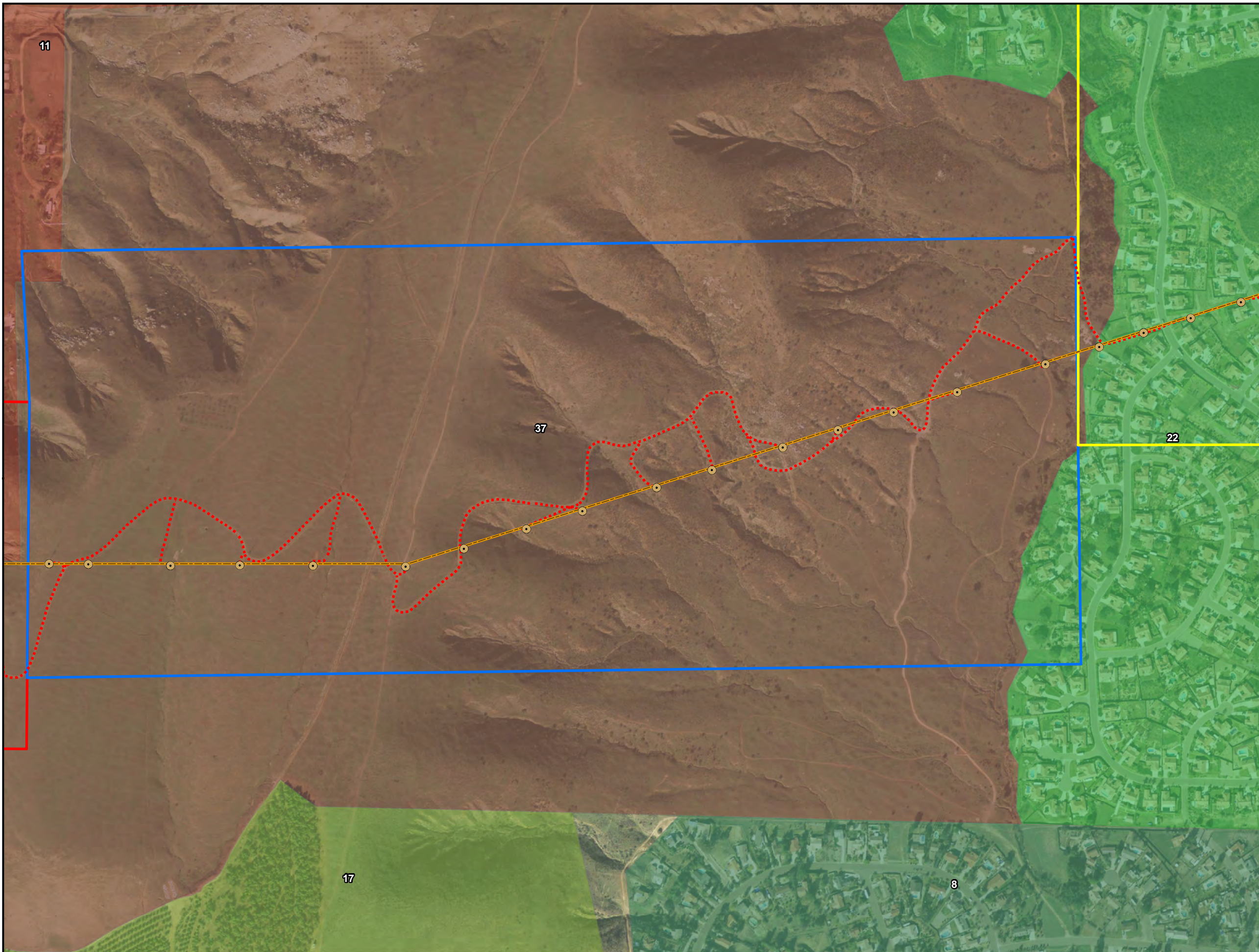


TL-637 Land Use Designations Map

Page 2 of 14

Version Date: 5/16/2013

-  Poles
-  TL-637 Centerline
-  Access
- Land Use Units**
-  Land Use Unit - 1
-  Land Use Unit - 2
-  Land Use Unit - 3
- Land Use Designations**
-  37. OPEN SPACE (CONSERVATION)
-  17. SEMI-RURAL RESIDENTIAL (SR-10)
-  11. SEMI-RURAL RESIDENTIAL (SR-2)
-  22. SPECIFIC PLAN AREA
-  8. VILLAGE RESIDENTIAL (VR-2)



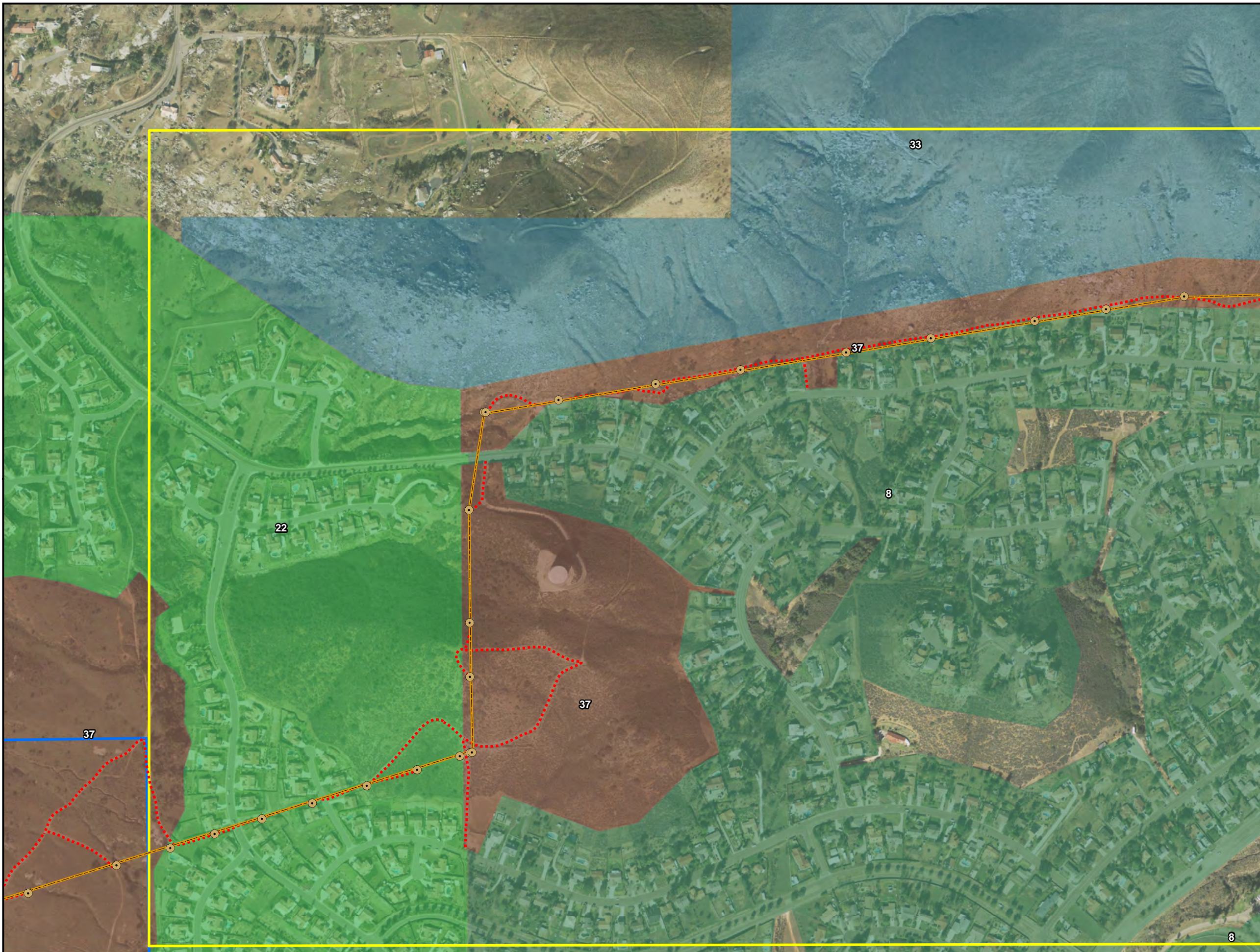
SCALE=1:5,500



TL-637
Land Use Designations Map

Page 3 of 14

Version Date: 5/16/2013



- Poles
- TL-637 Centerline
- ... Access
- Land Use Units**
- Land Use Unit - 2
- Land Use Unit - 3
- Land Use Designations**
- 37. OPEN SPACE (CONSERVATION)
- 33. PUBLIC AGENCY LANDS
- 22. SPECIFIC PLAN AREA
- 8. VILLAGE RESIDENTIAL (VR-2)



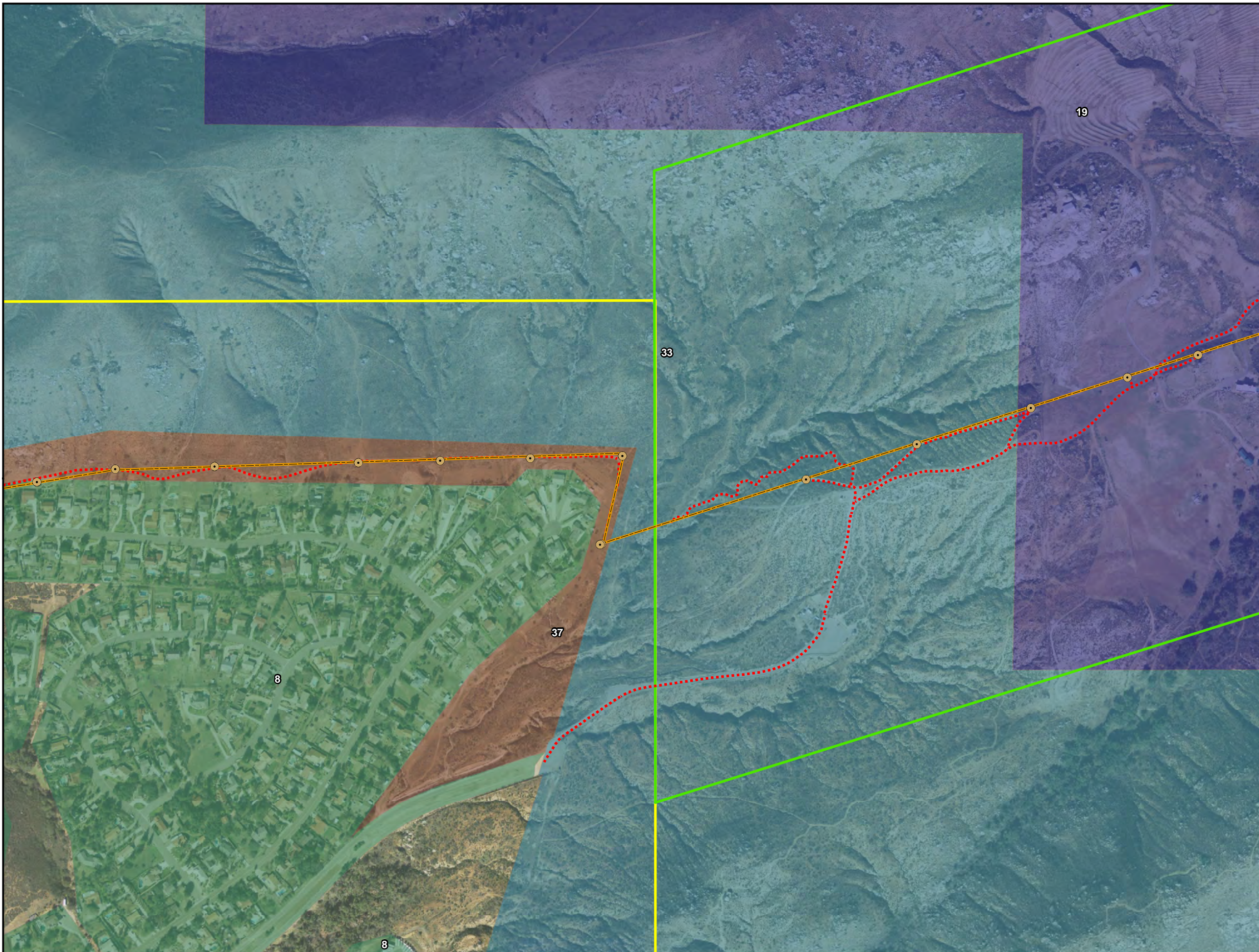
SCALE=1:5,500



TL-637 Land Use Designations Map

Page 4 of 14

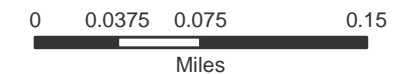
Version Date: 5/16/2013



- Poles
- TL-637 Centerline
- ... Access
- Land Use Units**
- Land Use Unit - 3
- Land Use Unit - 4
- Land Use Designations**
- 37. OPEN SPACE (CONSERVATION)
- 33. PUBLIC AGENCY LANDS
- 19. RURAL LANDS (RL-40)
- 8. VILLAGE RESIDENTIAL (VR-2)



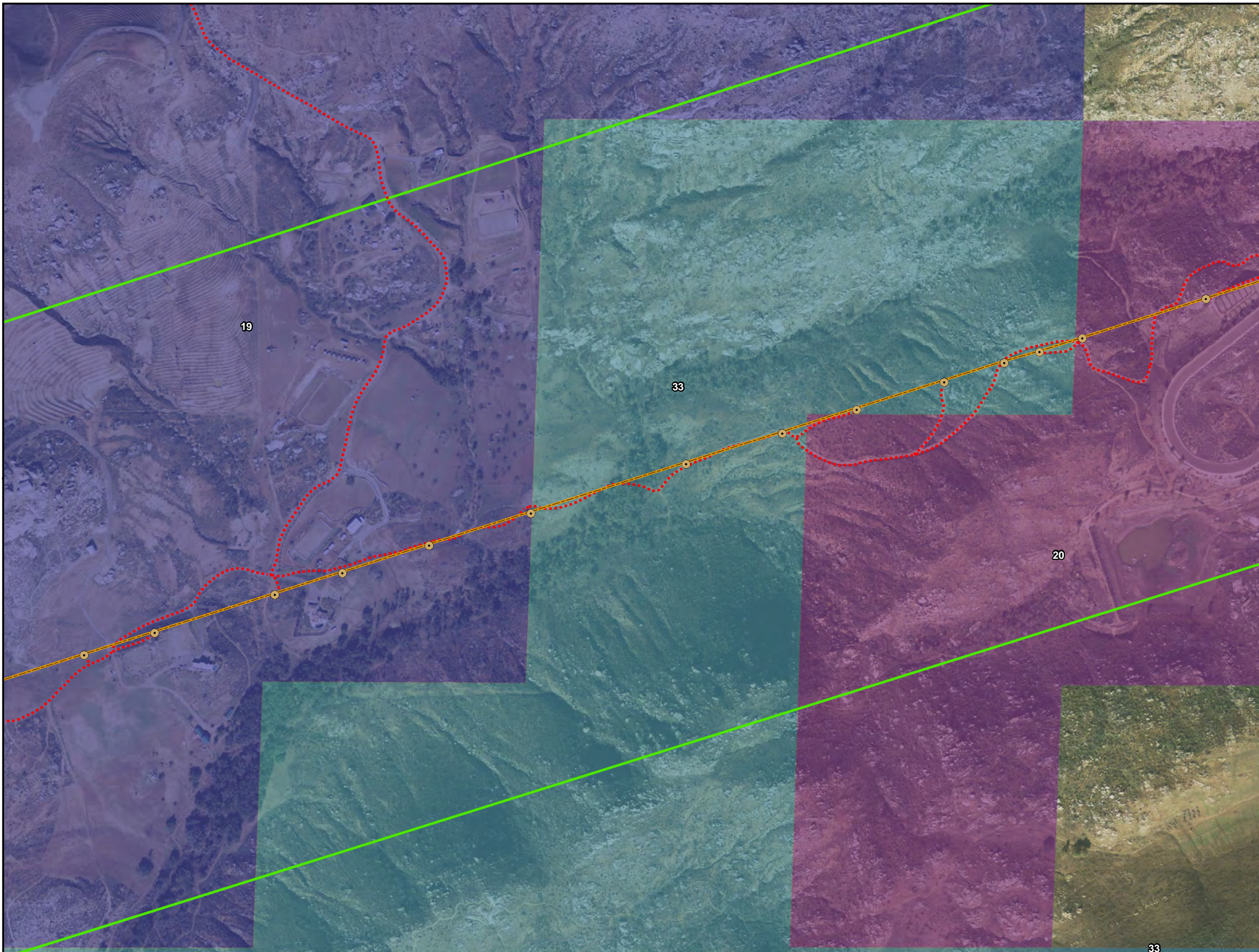
SCALE=1:5,500



TL-637 Land Use Designations Map

Page 5 of 14

Version Date: 5/16/2013



- Poles
- TL-637 Centerline
- ... Access
- Land Use Units**
- Land Use Unit - 4
- Land Use Designations**
- 33. PUBLIC AGENCY LANDS
- 19. RURAL LANDS (RL-40)
- 20. RURAL LANDS (RL-80)



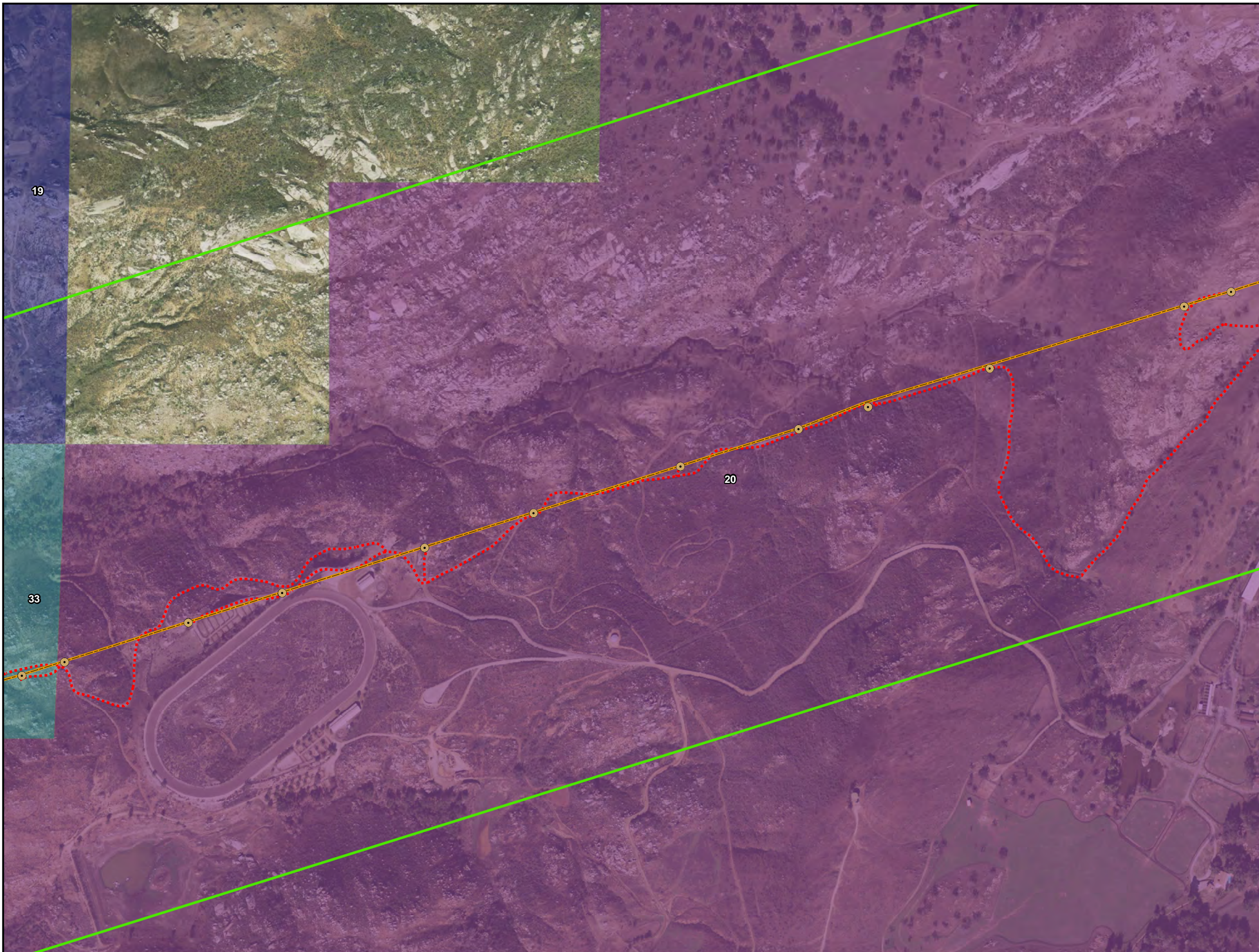
SCALE=1:5,500



TL-637 Land Use Designations Map

Page 6 of 14

Version Date: 5/16/2013



- Poles
- TL-637 Centerline
- ... Access
- Land Use Units**
- Land Use Unit - 4
- Land Use Designations**
- 33. PUBLIC AGENCY LANDS
- 19. RURAL LANDS (RL-40)
- 20. RURAL LANDS (RL-80)



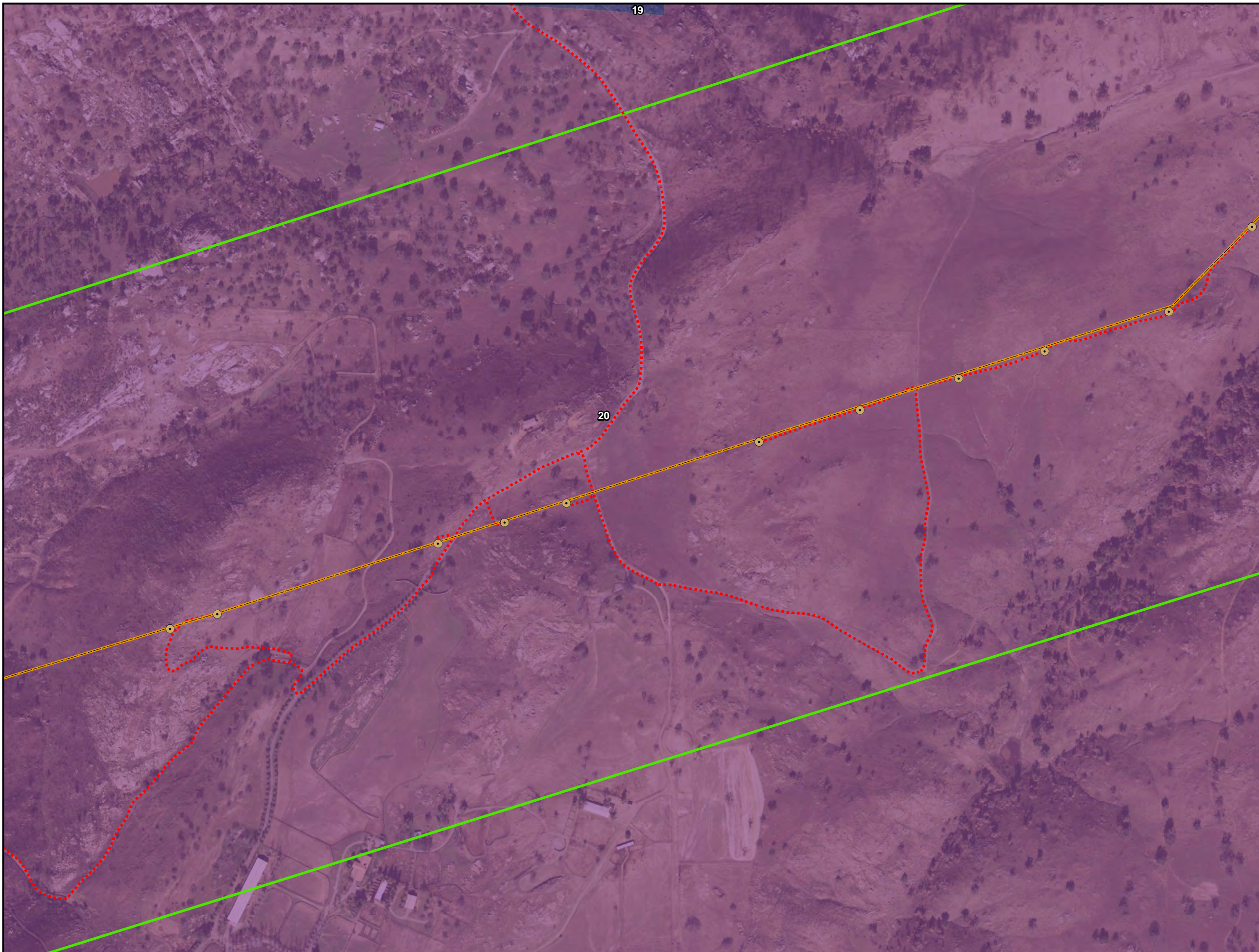
SCALE=1:5,500



TL-637 Land Use Designations Map

Page 7 of 14

Version Date: 5/16/2013



- Poles
- TL-637 Centerline
- ⋯ Access
- Land Use Units**
- ▭ Land Use Unit - 4
- Land Use Designations**
- ▭ 19. RURAL LANDS (RL-40)
- ▭ 20. RURAL LANDS (RL-80)



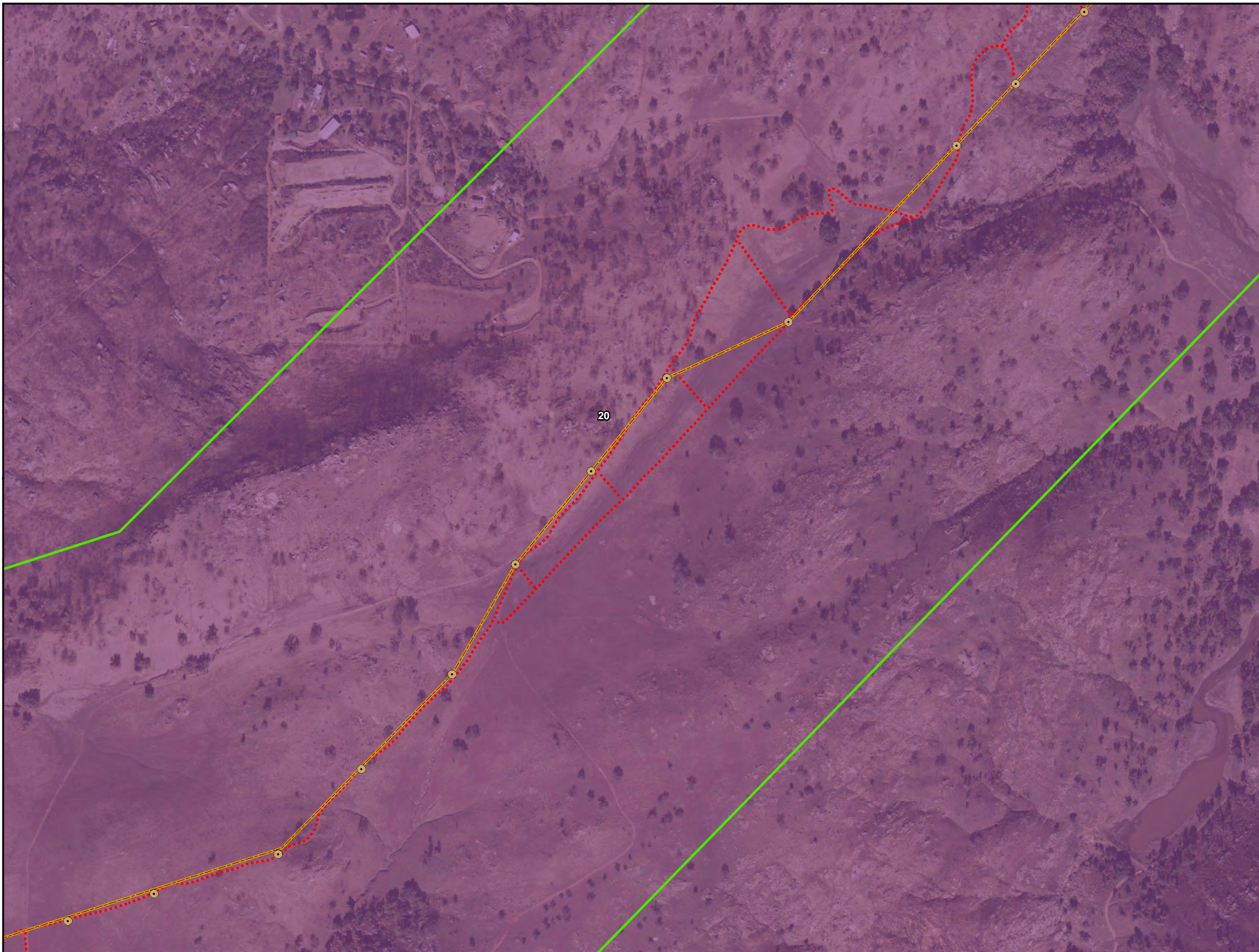
SCALE=1:5,500








TL-637
Land Use Designations Map

Page 8 of 14

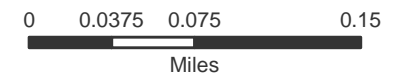
Version Date: 5/16/2013



-  Poles
-  TL-637 Centerline
-  Access
- Land Use Units**
-  Land Use Unit - 4
- Land Use Designations**
-  20. RURAL LANDS (RL-80)



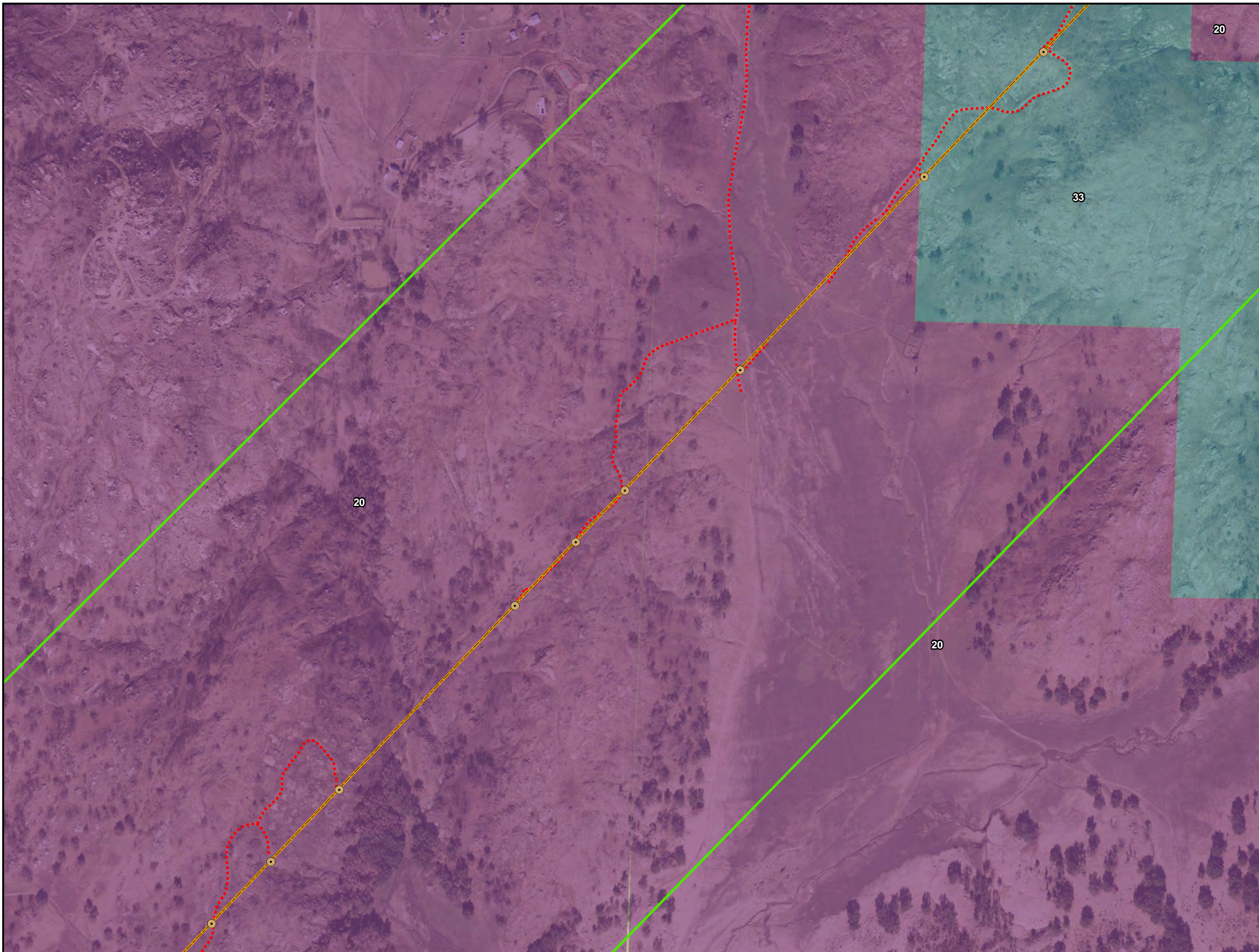
SCALE=1:5,500



TL-637 Land Use Designations Map

Page 9 of 14

Version Date: 5/16/2013



- Poles
- TL-637 Centerline
- ⋯ Access
- Land Use Units**
- ▭ Land Use Unit - 4
- Land Use Designations**
- ▭ 33. PUBLIC AGENCY LANDS
- ▭ 20. RURAL LANDS (RL-80)



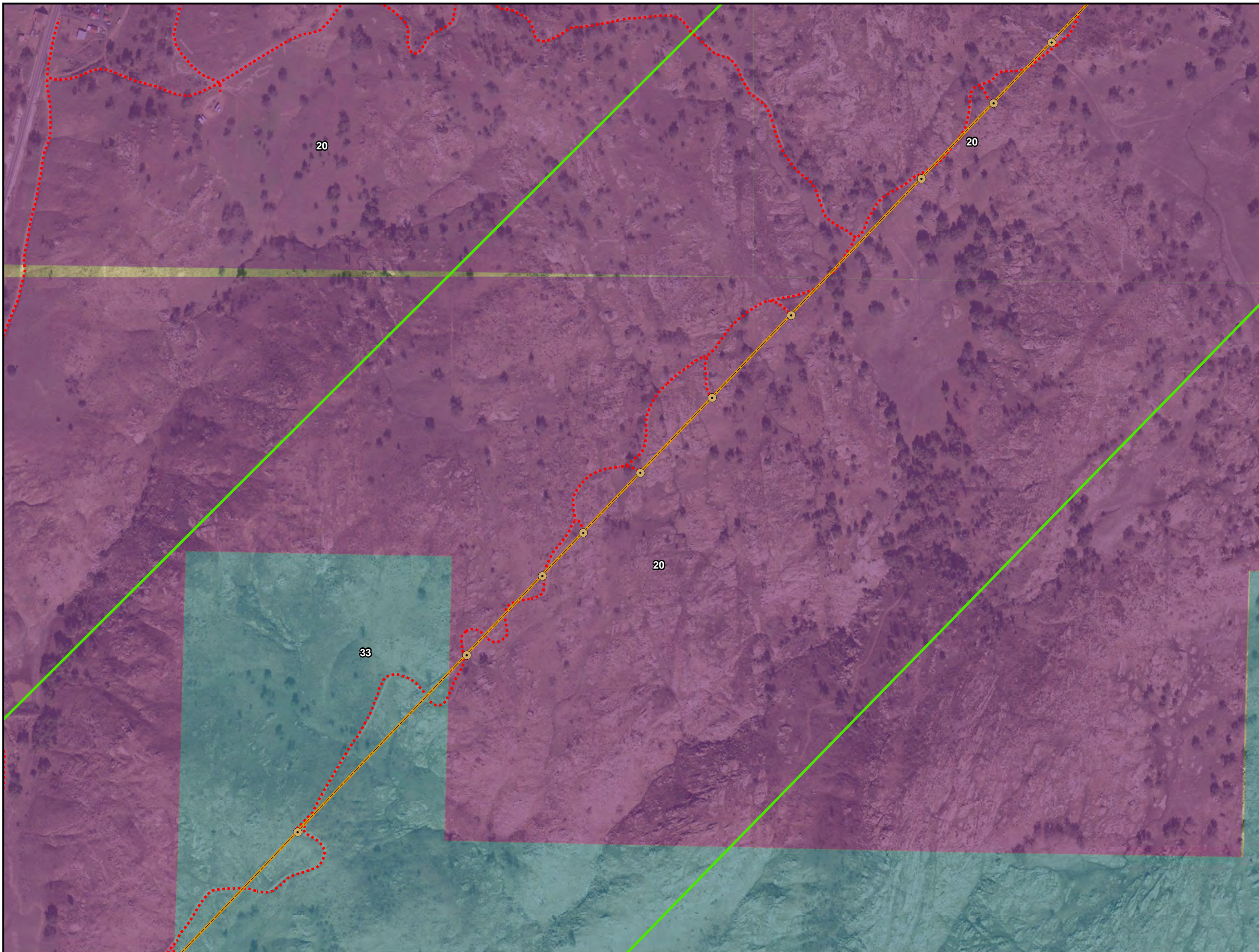
SCALE=1:5,500



TL-637
Land Use Designations Map

Page 10 of 14

Version Date: 5/16/2013



- Poles
- TL-637 Centerline
- Access
- Land Use Units**
- Land Use Unit - 4
- Land Use Designations**
- 33. PUBLIC AGENCY LANDS
- 20. RURAL LANDS (RL-80)



SCALE=1:5,500








TL-637
Land Use Designations Map

Page 11 of 14

Version Date: 5/16/2013

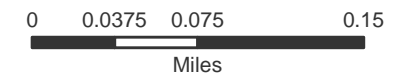
20

20

-  Poles
-  TL-637 Centerline
-  Access
- Land Use Units**
-  Land Use Unit - 4
- Land Use Designations**
-  20. RURAL LANDS (RL-80)



SCALE=1:5,500



TL-637
Land Use Designations Map

Page 12 of 14

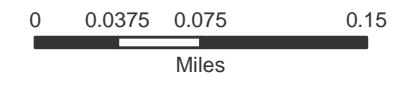
Version Date: 5/16/2013



- Poles
- TL-637 Centerline
- ... Access
- Land Use Units**
- Land Use Unit - 4
- Land Use Designations**
- 33. PUBLIC AGENCY LANDS
- 20. RURAL LANDS (RL-80)



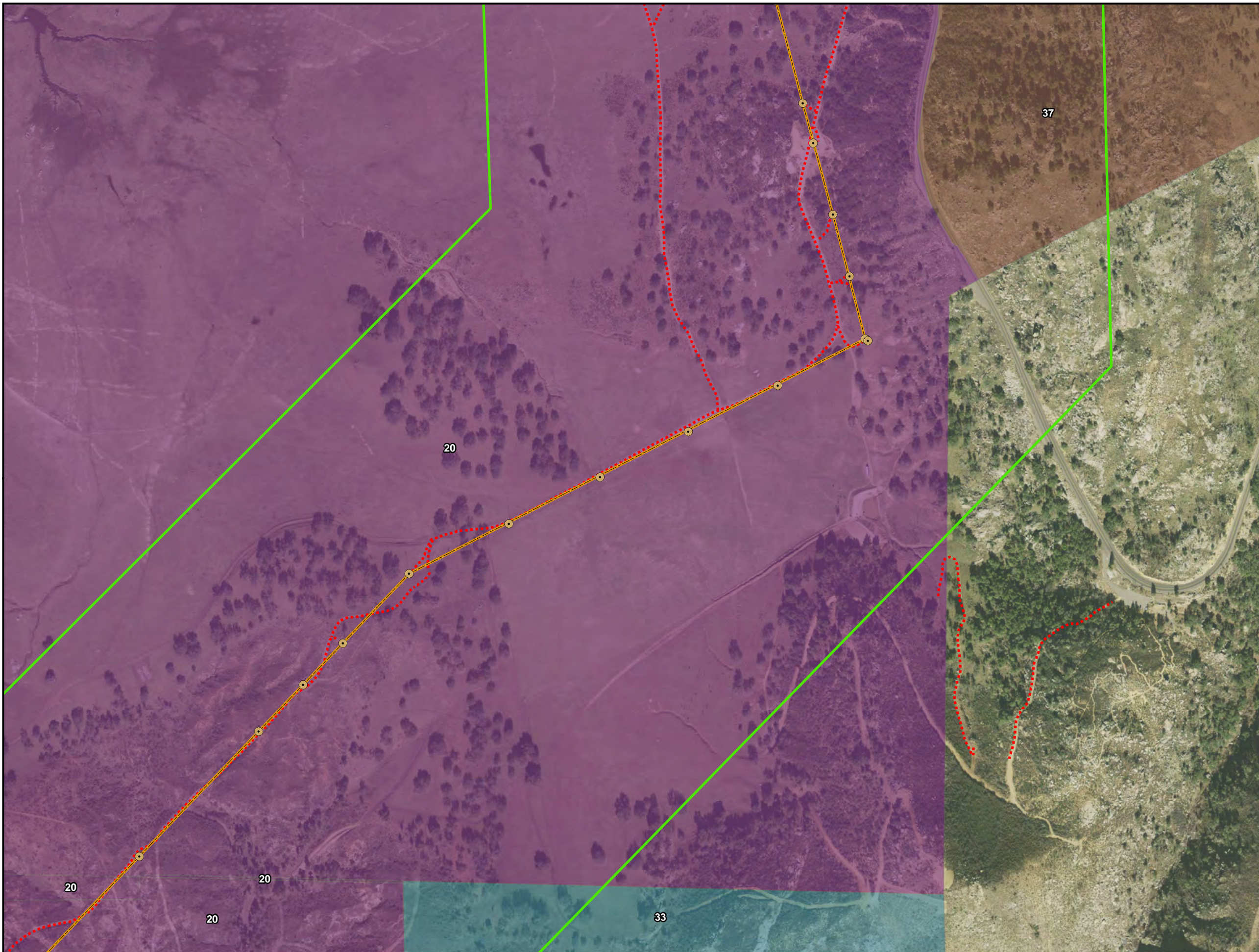
SCALE=1:5,500










TL-637
Land Use Designations Map

Page 13 of 14

Version Date: 5/16/2013



-  Poles
-  TL-637 Centerline
-  Access
- Land Use Units**
-  Land Use Unit - 4
- Land Use Designations**
-  37. OPEN SPACE (CONSERVATION)
-  33. PUBLIC AGENCY LANDS
-  20. RURAL LANDS (RL-80)












SCALE=1:5,500

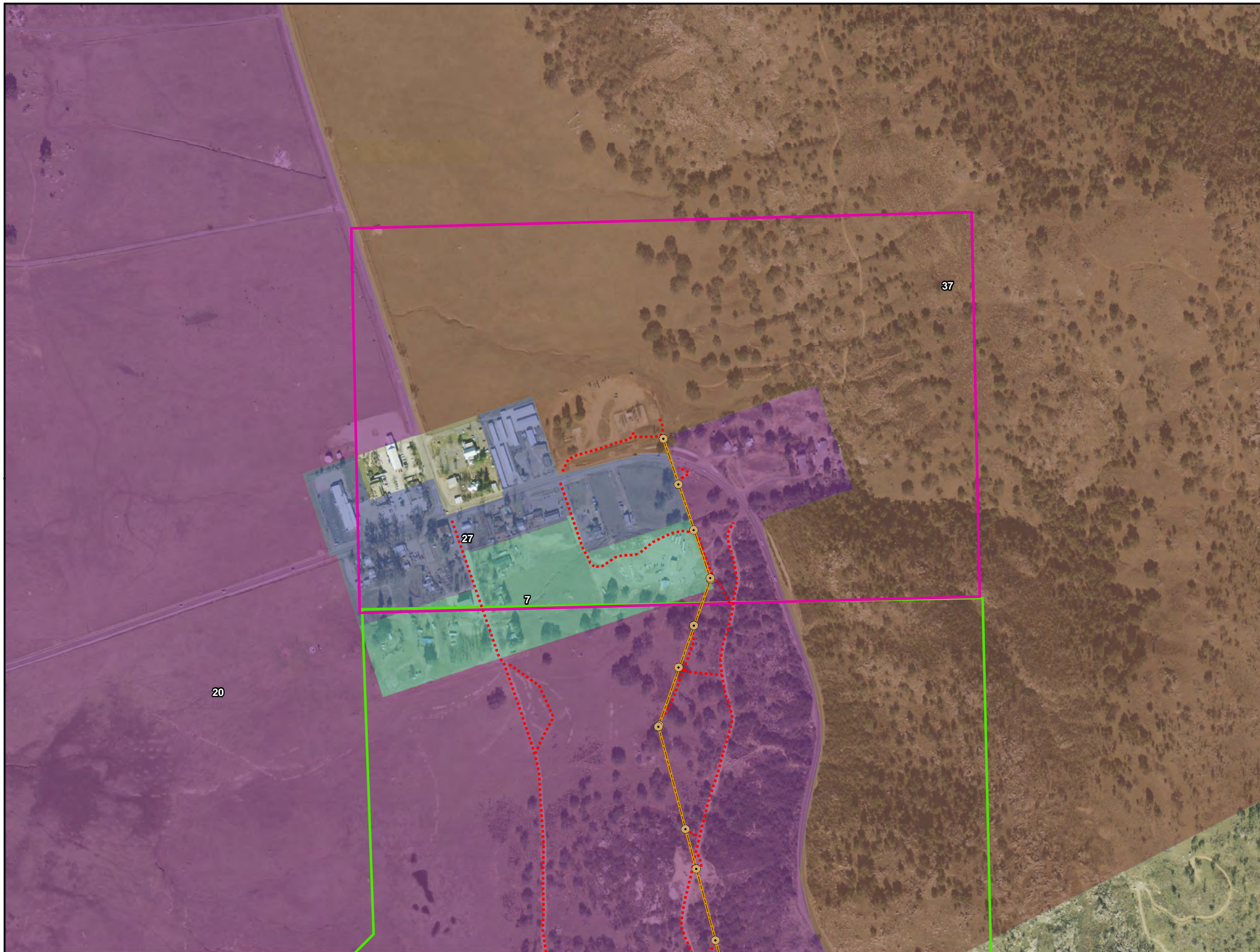


TL-637
Land Use Designations Map

Page 14 of 14

Version Date: 5/16/2013

-  Poles
-  TL-637 Centerline
-  Access
- Land Use Units**
-  Land Use Unit - 4
-  Land Use Unit - 5
- Land Use Designations**
-  37. OPEN SPACE (CONSERVATION)
-  27. RURAL COMMERCIAL
-  20. RURAL LANDS (RL-80)
-  7. VILLAGE RESIDENTIAL (VR-2.9)



SCALE=1:5,500

